

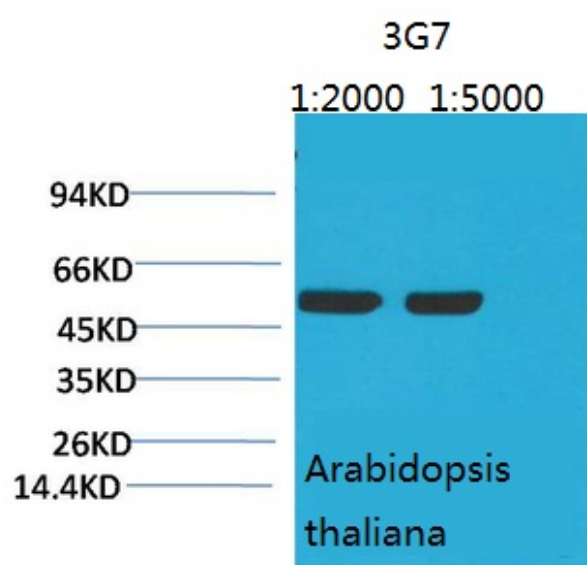


Rubisco (Large Chain) Monoclonal Antibody(3G7)

Catalog No	YP-Ab-04840
Isotype	IgG
Reactivity	Plants
Applications	WB
Gene Name	
Protein Name	
Immunogen	Protein
Specificity	Rubisco(Large Chain) protein detects endogenous levels of Rubisco(Large Chain)
Formulation	Liquid in PBS containing 50% glycerol, 0.5% BSA and 0.02% sodium azide.
Source	Monoclonal, Mouse
Purification	The antibody was affinity-purified from mouse ascites by affinity-chromatography using specific immunogen.
Dilution	WB 1:2000-5000
Concentration	1 mg/ml
Purity	≥90%
Storage Stability	-20°C/1 year
Synonyms	
Observed Band	53kD
Cell Pathway	
Tissue Specificity	
Function	
Background	Rubisco (Ribulose-1,5-bisphosphate carboxylase/oxygenase) catalyzes the rate-limiting step of CO ₂ fixation in photosynthetic organisms. It is demonstrably homologous from purple bacteria to flowering plants and consists of two protein subunits, each present in 8 copies. In plants and green algae, the large subunit (~55 kDa) is coded by the chloroplast rbcL gene, and the small subunit (15 kDa) is coded by a family of nuclear rbcS genes.
matters needing attention	Avoid repeated freezing and thawing!
Usage suggestions	This product can be used in immunological reaction related experiments. For more information, please consult technical personnel.



Products Images



Western blot analysis of Arabidopsis with
Rubisco(Large Chain) Mouse mAb diluted at
1)1:2,000 2)1:5,000